

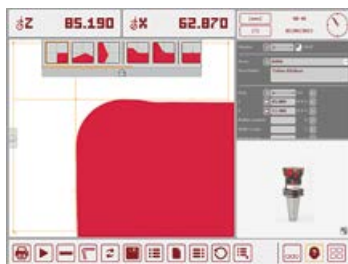
# EZset with ImageController3

EZset350/420/600 IC3

The EZset with ImageController3 comes with an integrated tool management with graphics library. Tool cutting edges can be visualized with 28-fold magnification. The EZslide 17" touch screen control with touch and slide function is user-friendly and personally customizable.



EZset with IC3	Measurement Range Z	Measurement Range X	Snap Gauge
EZset350	350 mm	320 mm	0 mm
EZset420	420 mm	420 mm	100 mm
EZset600	600 mm	420 mm	100 mm
EZset600/ 570	600 mm	570 mm	0 mm



Operator-independent measurement with dynamic crosshairs and automatic detection of cutting edge shape



Graphics Management: The operator can assign a graphic from the integrated standard library to the tool or to the machine tool



EZmax – Software function for determining and measuring the tool contour



Cutting edge inspection – 28-fold magnification of the cutting edge in incident light for quality control

### Your advantages and benefits:

- Easy to use and quick to learn with minimal training
- SK 50 high-precision spindle with integrated calibration spheres including spindle indexing and braking
- Fast measurement, setting and testing of tool cutting edges (length, diameter, radius and two cutting edge angles)
- EZmax software function to determine and measure the maximum contour of the tool
- Various measuring programs for simple measurement like radial and axial run-out of the tool cutting edge in the  $\mu\text{m}$  range
- Quick and easy printing of the measuring results on labels
- EZset one-hand control handle for quick, concurrent positioning of the Z- and X-axes

### Standard equipments:

- Base table
- Cutting edge inspection (20-fold magnification of the cutting edge in incident light) and projector function
- Software function for oversize radii/angles
- Software function for the output of thermal labels
- EZtouch: Menu operation via touch-screen
- Tool management
- EZnavigator – compass needle
- EZstart – quick and easy measurement of standard tools
- Pneumatic spindle indexing and spindle brake
- Adapter and utensil tray
- Label printer
- Graphics management: Graphical representation of the tools
- Data output via RS232 interface
- List Printing for the output of DIN A4 reports

### Options:

- SK 50 vacuum tool mounting spindle
- Universal spindle for power-operated tool clamping
- Adapter SK, HSK, Capto, VDI and many more
- Storage board including keyboard and mouse
- EZspindle-protection
- EZturn: center measurement device with monochrome camera
- Autofocus: Automatic focus on the tool cutting edge
- LAN/network: Data output to the CNC-machines via network connection or USB. Setup sheet to generate and save of tool lists

## EZset with ImageController3

EZset350/420/600 IC3

Quantity	Description	ID-no.	Unit price £	Total price £
	EZset 350 IC3 (MR Z=350/X=320 SG=0)	EZ35032030	13.850,00	
	EZset 420 IC3 (MR Z=420/X=420 SG=100)	EZ42042030	14.350,00	
	EZset 600 IC3 (MR Z=600/X=420 SG=100)	EZ60042030	15.850,00	
	EZset 600 IC3 (MR Z=600/X=570 SG=0)	EZ60057030	17.350,00	
	Rotary center measurement device (only MR=420 and 600)	EZTURN	2.705,00	
	Autofocus	EZ8701203	2.060,00	
	Vacuum clamping for SK 50 spindle	EZVAKUUM	610,00	
	Adapter SK 30/40 (further sizes on demand)	EZADSK	380,00	
	Adapter HSK size	EZADHSK	545,00	
	Adapter SK 50 / HSK eccentric size	EZADHSK-E	1080,00	
	Adapter VDI size	EZADVDI	795,00	
	Adapter			
	Universal spindle for power-operated tool clamping	EZLS41550	2.745,00	
	Attachment holder SK (30/40/50)	EZ60422	915,00	
	Attachment holder HSK (32/40/50/63)	EZ60579	2.130,00	
	Storage board including keyboard and mouse	EZ9561401-04	375,00	
	Data output package (DOP)	EZSW-EZDOP	2.010,00	
	Post-processor	EZSW-EZDOPF	520,00	
	EZset »zidCode« barcode printing (requirement DOP)	EZ8708212	1.345,00	
	EZset »zidCode« incl. barcode scanner (per machine)	EZ96910603.1	2.955,00	
	Maintenance unit	EZMAINTAIN	99,00	
	Packaging	EZPACK-GO	250,00	
	Shipment	EZHIP		
	Service and support	EZSERVICE		

 Order

Total amount:

Your Investment:

Customer address

Shipping address (if different)

Date/Signature EZset GmbH &amp; Co. KG

Date/Signature customer